

# QuoteFlash

Wireless Real Time Financial Data Services

---

# QuoteFlash for PalmOne Treo 600

(Version 1.8 – December 2004)

---

## *User's Guide*

1. **Introduction – System Requirements**
2. **Java runtime Installation / Uninstall**
3. **QuoteFlash Application Download**
4. **Start Application and Initial Set-up**
5. **Connect, login and display data**
6. **Data updates and navigation**
7. **Web Based User Set-up Facilities**

### **Support :**

Tel. +41 22 704 30 60  
Fax +41 22 704 30 80  
e-mail: support@dts.ch  
web: www.quoteflash.com

## 1. Introduction

The QuoteFlash wireless financial information services are based on the use of the GSM/GPRS mobile phone network facilities with suitable phones. As they become available, many phones will be supported. Check the [www.quoteflash.com](http://www.quoteflash.com) web site for the latest status.

The services operate through an application that resides on the phone. It is therefore **not** a WAP or HTML WEB based system accessed through a browser, but a true data feed based service.

A careful reading of this guide as well as of the phone manual will enable any user to obtain in very little time the best use and results out of the QuoteFlash service.

It is assumed that the user is familiar with the main functionality of the phone.

## System Requirements

In order to use the QuoteFlash service on the Treo 600, you need:

- The IBM MIDP Java runtime software installed on the device
- To download the QuoteFlash application
- A subscription with an operator that includes **Web** GPRS access and supports the Treo.
- If you are in a roaming situation, you must select a network with which your operator has a GPRS roaming agreement (check on the operator web site).
- A valid QuoteFlash account, including the user defined data page specifications

## Security and Confidentiality

The QuoteFlash application operates under J2ME (CLDC/MIDP). This is a fully secure and protected environment (also called "sandbox"). The application has no access to any information on the phone, other than its own data. The application cannot affect or corrupt any part or other functions of the phone. Furthermore, removing the application deletes all trace of the application on the phone.

## 2. Java runtime Installation / Uninstall

Follow the instructions of the IBM MIDP Installation Guide.

### **Very Important!**

Before uninstalling the Java runtime from the Treo, make sure that all the Midlets (Java applications) have been deleted.

## 3. OTA (Over the Air) Application Download / Delete

App. Launcher → ALL → Midlet HQ → Install

URL:               http : //www.tefiso.de/treo/QuoteFlashTreo.jar  
(case sensitive!)

→ OK

At the "AMS Warning", click "Yes"

A "Success" message is displayed, click "OK"

### **To delete (uninstall) the QuoteFlash application**

→ Midlet HQ → Select QuoteflashTreo → .... → Delete

Note : all Midlets (java applications) must be deleted before deleting the java runtime)

## 4. Start the QuoteFlash Application

- App. Launcher → All → QuoteFlash
- The first time QuoteFlash is started after download, the provided "User name" must be entered, then click "OK"

## 5. Connect, login and display data

- a) click "Page list" → select
- b) when prompted, select "Yes" to allow http connection  
Click "OK"

The login and data transmission occurs, the page list is displayed.  
Select a page to display data.

## 6. Data updates and navigation

- a) move between pages with left/right keys
- b) move within the page (scrolling) by bringing the cursor (down key) and with left/right keys
- c) update the current page by pressing the action key
- d) update all pages by clicking "Update All"
- e) display detailed information by clicking twice on the value line (return with "Cancel")
- f) Remove the cursor with "Cancel"

## 7. Web Based User Set-Up Facilities

### 7.1 Web site user facilities

The Web site facilities are located at the URL: [www.quoteflash.com](http://www.quoteflash.com)

The user can create and/or modify pages. In order to display the account and the facilities, the user must enter the "Account Name" (same name as used for the registration on the phone) and a password (initially supplied or user modified).

#### 7.1.1 Browser Settings

In order to access the web site and make full use of its facilities, some settings are required in the browser. These settings are very much standard and do not affect the security or any other aspect of the browser operation.

##### Settings for Internet Explorer 6.x

- Cookies

In "**Tools -> Internet options -> Privacy -> Advanced**", make sure that the "**Always allow session cookies**" is set.

- Cache Parameters

Go to "**Tools -> Internet options -> General**"

In Section "**Temporary Internet Files -> Settings**", set the option for "**check for newer version of stored pages**" to "**automatically**"

- Refresh

Go to "**Tools -> Internet options -> Security -> Custom level -> Allow META REFRESH**" and set to "**Enable**"

##### Settings for Internet Explorer 5.x

- Cookies

In "**Tools -> Internet options -> Security -> Custom level**", make sure that the "**Allow per-session cookies (not stored)**" is set to "**Enable**".

- Cache Parameters

Go to "**Tools -> Internet options -> General**"

In Section "**Temporary Internet Files -> Settings**", set the option for "**Check for newer version of stored pages**" to "**automatically**"

#### 7.1.2 Web Page Layout

QuoteFlash  
Mobile Phone Financial Data Services

Modem 5 (compatible, WSE 6.0, Windows NT)  
81.62.78.243 (243.79.62.81 dial bluewin)  
06:07 (14.1) 00:37

**Site Map**  
[Service description](#)  
[Account Management](#)

**PDF Documentation**  
[Quote Flash T150-3050](#) 131682  
[Quote Flash](#) 371688  
[Quote Flash](#) 135787  
[Export/Import Value List](#) 9075  
[Order Form](#) 7480  
[Fiches](#) 6040  
[Selects MacPro](#) 17141  
[Selects Pro](#) 17211

Click to display document if not displayed, right click and save as a folder.

**Customer Login**

**Account**  
 TEST1 Doe John 55

**Pages**

A1	Fiches	Data	tr 3c	11
A-2	Indices	Data	tr 4c	8
A-3	Index Futures	Data	tr 4c	7
A-4	Interest Rates	Data	tr 3c	10
A-5	Energy	Data	tr 4c	4
A-6	Napoleo	Data	tr 4c	4
A-7	NYSE	Data	tr 4c	7
A-8	News	News	tr 3c	3

**Page Contents**

BCHF	BCHF	Percent
BEUR	EURCHF	Percent
BURCHF	EURCHF	Percent
BGBP	GBPCHF	Percent
BJPY	JPYCHF	Percent
BAUD	BUSD	Percent
BCAD	BCAD	Percent
BURUPY	EURUPY	Percent
BGRCHF	GBPCHF	Percent
BPAU	BUSD	Percent
BCAD	BUSD	Percent

**Subscribed Groups**

[News]	Realtime
CBOT (Financials)	Realtime
CMC (COM)	Realtime
Currency Cross Rates	Realtime
Currency Spot Rates	Realtime
Curn	Realtime
Guarnted Futures	Realtime
Govt Bond Yields	Realtime
Interest Rates (Deposit)	Realtime
IPE	Realtime
LSE	Realtime

**Instruments**

SAUD	BUSD
SGRL	SGRL
SCAD	BCAD
SCHF	BCHF
SCDC	BDCZK
SDKX	SDKX
SHKD	SHKD
SHLF	SHLF
SHR	SHR
SPY	SPY
SPW	SPW

The web page is divided in sections:

### Account

This is the account name and owner of the account logged in

### Pages

This lists the pages already specified for this account

### Page Contents

This lists the instruments contained in the highlighted page, in the order of display on the phone (a max of 50 instruments can be specified on a page)

### Subscribed Groups

These are the data groups and exchanges that have been subscribed by the user, together with the access level authorized (Real-time or Delayed). This can not be changed by the user.

### Instruments

These are the instruments that are supported for the highlighted group. If instruments that are required are not listed, contact the support and, save exceptions, they will be added to the list.

### PDF Documentation

These are the commercial documents that can be displayed (if your browser supports it), printed or downloaded.

## 7.2 Set-up Functions

### 7.2.1 Create a new page

In the "Pages" section, click "Add". A box is displayed at the top left:

As matrix navigation is not currently supported, we recommend that you define only one row ("A") and number the pages sequentially.

A page can be one of two types, "Data" or "News". Only one news headline page can be specified.

The format of the page is 1 or 2 lines per instrument and if 1 line, with 3 or 4 columns.

Currently, the application overrides this setting and assigns the format automatically.

### 7.2.2 Edit a Page

Highlight the page line in the "Pages" window and select "Edit". The following is displayed (top left):

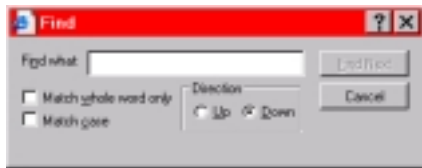
All the fields can be edited. To change the page order in the page list, change the column number within the page row.

### 7.2.3 Add/Remove an Instrument To/From a Page

First of all, you have to check if the required instrument is currently included in the service.

Select the relevant data group in the "Subscribed Groups" window.

Highlight an instrument in the "Instrument" window and perform a "CTRL-F" on the keyboard. The following is displayed:

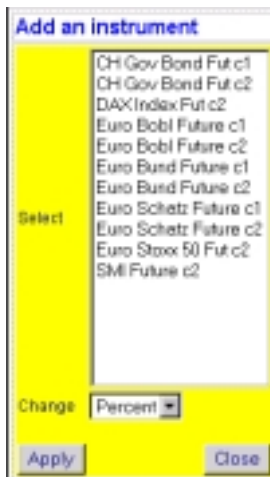


Type any part of the instrument name and if found you can proceed with the selection. If not, you have to request the inclusion of this instrument in the service ([support@dts.ch](mailto:support@dts.ch)).

If the instrument is in the list, you can proceed with the instrument add:

- a) Highlight the page in the "Pages" section.
- b) Select the instrument group in the "Subscribed Groups" section
- c) Click "Add" in the "Page contents" section

The following is displayed (top left):



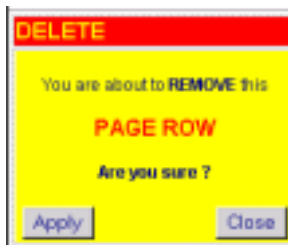
Select the instrument to be added to the page (select also the "Change" format when applicable).

The instrument will be added in the page at a position above the currently highlighted instrument. To add the instrument as the last on the page, first select the **(End-of-Page)** line

The instruments can be moved with the "Up/Down" buttons in the "Page contents" section.

To keep adding instruments from another group, select the group in the **"Subscribed Groups"** window.

To **remove** an instrument, select it in the "Page contents" section and click "Del". The following is displayed (top left):



### 7.2.4 Set the Instrument Display Parameter

A page can be edited at any time.

Select the instrument in the "Page contents" section and click "Edit". The following is displayed (top left):

**Edit this page row**

Short DJC1  
 Full DJ Future c1  
 Change Point

Apply Close

The display of the “Change” value (4 column display only) can be in “Point” or “Percent”. Note that on the phone, in the detailed information screen, both are displayed.

### 7.2.5 Activate Settings

To activate the current settings on the phone, click on “**SEND TO PHONE**”. You need to exit and restart the phone QuoteFlash application to get the new settings.

### 7.2.6 Account information Editing

Click “Edit” in the “Account” section. The following is displayed (top left):

**Edit your account**

Title Mr  
 First name John  
 Last name Doe  
 Email doe@here.com  
 Phone 9986543213456  
 Language English  
 Expiration 31.12.2003  
 User ID TEST1  
 Password test

Apply Close

All the fields can be modified by the user, including the password for web access to the account. (initially, there is no password, we recommend that one is set at the first visit).