

**QuoteFlash**

*Wireless Real Time Financial Data Services*

---

# QuoteFlash for Sony Ericsson T610/30

(Version 1.80– January 2005)

---

## *User's Guide*

1. **Introduction – System Requirements**
2. **Phone Configuration**
3. **QuoteFlash Application Download**
4. **User Account Set-up**
5. **Start Application and Initial Set-up**
6. **Data Update and Display Facilities**
7. **Data Transmission Costs**
8. **Handling of Error Situations**
9. **Web Based User Set-up Facilities**

### **Support :**

Tel. +41 22 704 30 60  
Fax +41 22 704 30 80  
e-mail: support@dts.ch  
web: www.quoteflash.com

## 1. Introduction

The QuoteFlash wireless financial information services are based on the use of the GSM/GPRS mobile phone network facilities with suitable phones (phones with Java support) .

The services operate through an application that resides on the phone. It is **not** a WAP based system accessed through a browser, but a true data feed based service.

A careful reading of this guide as well as of the phone manual will enable any user to obtain in very little time the best use and results out of the QuoteFlash service.

### Important Note for Sony Ericsson T610/T630 Users

The T610/T630 is not a multi-tasking system. To make a phone call or use any other function of the phone, you must first exit from the QuoteFlash application. If you receive a phone call while in the QuoteFlash application, you can answer immediately and after the call will be prompted to resume the application. It is then necessary to go to “**Top menu -> Page list -> any page**” and request the update. The complete data will be repeated. Due to these disconnections/reconnections, the cost of data transmission can be higher with this phone than with a multi-tasking phone.

### System Requirements

In order to use the QuoteFlash service, you need:

- A supported phone (This manual covers specifically the Sony Ericsson T610/T630)
- To download the QuoteFlash application on the phone
- A subscription with an operator that includes GPRS and allows **Web** GPRS access
- A valid QuoteFlash account, including the user defined data page specifications
- If you are in a roaming situation, make sure that you select a network for which your operator has a GPRS roaming agreement

### Security and Confidentiality

The QuoteFlash application operates under J2ME (CLDC/MIDP). This is a fully secure and protected environment (also called “sandbox”). The application has no access to any information on the phone, other than its own data. The application cannot affect or corrupt any part or other functions of the phone. Furthermore, removing the application deletes all trace of the application on the phone.

## 2. Phone Configuration (Sony Ericsson T610/T630)

The phone must be configured for the WAP GPRS access (required for both the application download and the QuoteFlash service operation).

### 2.1 WAP/WEB GPRS Setup

Your phone must be configured for the GPRS WAP **and** WEB access.

This can be done through the operator web site from which a configuration SMS can be sent to the phone. Once received and saved, it is sufficient to open this SMS and validate the configuration. The configuration SMS can also be sent from the Sony Ericsson configuration utility at:

[www.sonyericsson.com/support](http://www.sonyericsson.com/support)

Follow the instructions and select WAP GPRS

We recommend that this GPRS WAP access point be configured as the default.

In addition, it may be necessary to configure specifically for the WEB (Internet) access required by QuoteFlash

From the main menu:

Connectivity -> Data comm -> Data accounts -> select the GPRS account -> Edit -> APN

Enter the WEB access point for your operator (for instance "internet").

A list of WEB access points for most networks can be found at:

<http://www.reqwireless.com/apns.html>

If you have any difficulty, contact the QuoteFlash support and we will help you with this setup.

## 2.2 Set the Download QuoteFlash WAP Site Bookmark

From the phone menu, go to "**Internet Services -> More -> Bookmarks -> New bookmark**", and add the QuoteFlash WAP site bookmark:

First under "Title", type the bookmark name (for ex "QuoteFlash") then press "**OK**"

Under "Address" type the bookmark address:

<http://www.tefiso.de/qf/index.wml>

Then press "**OK**"

You can also request the QuoteFlash support to send an automatic download message

## 3. QuoteFlash Application Download (Initial and Upgrade)

### Initial Application Download (first time)

From the phone main menu, go to "**Internet Services -> More -> Bookmarks**" and open the **QuoteFlash bookmark** (download page).

(The bookmark must have been configured as specified under par. 2.1)

Answer "**yes**" to the connection request.

The WAP page is downloaded and displayed.

Select the current application version (usually the one with the highest version number).

When prompted, select "**Download**"

The selected application is downloaded and the installation performed (this can take 1-2 min).

When the message "**Saved in Games and More**" is displayed, select "**OK**"

Press the return key, answer **No** to the message "**stay in browser?**"

Press the return key and make sure that the connection is closed.

### Application Upgrade

To download an upgrade, **do not remove the current application version**. Perform the download as for the initial download. After selecting the application to download, you will be requested to perform a "**Replace**" of the current version with the new version. Answer yes and the download and replace (upgrade) will occur automatically, as per the initial download.

If you remove the current version of the application and/or perform a new initial download, you will have to request a resetting of your account, as the information linking the phone to the account has been lost.

This linking is performed at the first use (account access) of an application. It is preserved with an upgrade.

## 4. User Account Setup

In order to access a QuoteFlash service, you must have an account registered and the data page and page contents specified.

This specification includes:

- For each data page, the page name and page format (currently only one default format)
- For each page, the list of the instruments to be displayed on the page, in the order of display
- For each instrument, the display format (currently the “**Change**” in point or %)

The account is identified by a name that must be supplied when it first accessed (see section 5 for initial set-up). Once an account has been accessed from a phone, it can only be accessed from this particular phone. The account can be reset on demand if it must be accessed from another phone (for instance if the user changes phone) or if a new application was installed without going through the upgrade (Replace) procedure.

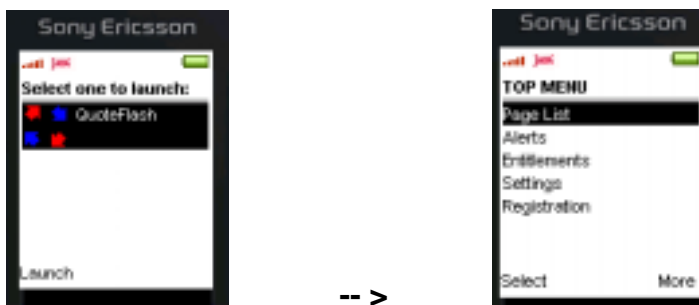
Initially, the account is configured by us (based on the user specifications). It can be changed at any time at the user request.

The user can have access to a web site (**QuoteFlash.com**) that provides the functionality to create and modify the account data specifications, within the assigned user entitlements. (See section 9 for the Web based facilities).

## 5. Start/Exit Application and Initial Setup

### 5.1 Start Application

From the phone Main Menu, go to “**Entertainment -> Games & more**” and select the “**QuoteFlash**” application line. The application starts and the Top Menu is displayed (this takes about 15-20 sec):



### 5.2 Exit Application

To exit the application, from the Top Menu press the return key and when the message “**Exit application?**” is displayed, select “**Yes**”.

### 5.3 Initial Setup

The first time an application is used, the account name and time zones must be set:

#### 5.3.1 Set Account

From the Application Top Menu, move to and select “**Registration**”. Move to the field under “**User**”, press “**Select**”, enter the use/account name, respecting the upper/lower case. Press “**Accept**” then “**More -> OK**”  
The display returns to the Top Menu.

Enter Account Name



### Note on Account Setting

The first time you connect with a new account setting, the system will link this phone to the account. Thereafter, the account can only be used from this phone. If an application upgrade (Replace) is performed, the settings are preserved.

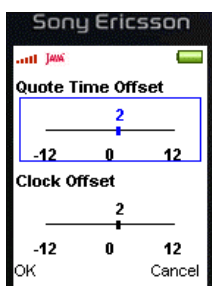
If the user changes phone or installs a new application, the account must be reset to allow the connection and re-establish the link. Contact the support when this is necessary.

### 5.3.2 Set Timezone

There are two time zone settings:

- **Quote Time Offset** (adjusts the update time stamp from GMT)
- **Clock Time Offset** (adjusts the current time always displayed on the first line of a data/news display page)

The clock time is taken from the "Time and date -> Set time" In the **Settings** entry of the phone main menu (this is set by the user).



From the application Top Menu, go to "**Settings**".  
 Select which time offset is to be adjusted by moving Up/Down.  
 Adjust the offset value by moving Right/Left  
 Validate through the "**OK**".

The display return to the top menu

## 6. Data Update and Display Facilities

### 6.1 Application Connect

In order to get and display data updates, you must first be connected.

From the application Top Menu, select the "**Page List**" menu line (then select a page if there is already a page list displayed) and press the joystick. The first time you connect, there is no page and you are prompted to press the joystick.

To select a page from the page list, move to the page line on the list and press the joystick.

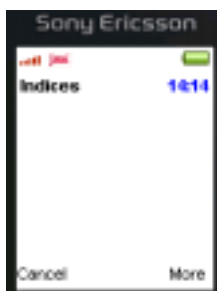
You can also select by pressing the key "0" on the keyboard.

#### Page List



The number associated with each page on the list corresponds to the "short key" allowing the switch from one page to another.

#### Data Page (initially empty)



When you request an update of the page (or press the joystick there is no page yet) while you are not yet connected, you are prompted for the Web access. Select "**Allow web access**"

The connection will be established, the current data page configuration downloaded as well the current values for all instruments (as "**Repeat**" values, indicated with an "**R**" beside the time stamp).

This may take about 20-30 sec for an average configuration.

### 6.2 Get Data Updates

#### Manual Updates

To update the currently displayed page, click the joystick or key 0 on the keyboard.

To update all the pages, while displaying any page, select "**Update All**".

(It is also possible to select the "**Update Screen**" and "**Update All**" by selecting "**More**" and then the function.

The update time depends on how many instruments are being updated and on the network performance. The update time for the current page will normally be around 3-4 sec for an 8-10 line page. An "Update All" may take 6-7 sec). Whenever an update request is made, the status of the request is indicated at the top of the page ("requesting -> receiving -> processing"). If there is a problem with the connection, the indication will remain on "requesting" until a time out occurs. In this case, Exit and restart the application. Note that this top line displays the current page name and the current time (the time of the phone, adjusted with the clock time offset (see par 5.3.2 for clock offset setting)



The values that are updated are indicated on the time stamp (red for 3 sec. and then grey).



### Automatic Updates

It will be possible to set the system to request updates automatically with a periodicity specified by the user. This will require great care so as not to incur too high costs of transmission. You will need an activation code for the Auto Update mode to be available. Check the specific manual for the use of the Auto Update facility.

### Repeat All

This Function, accessed through the "More" menu while displaying a data page, will request a refresh of all data, whether there have been updates or not. The time stamp is displayed with an "R".

This is used only if the user feels that it is missing updates (should never happen!) and wishes to make sure that the pages are updated to the latest values.

This function is executed automatically when the first request is made after the start of the application.

## 6.3 Navigation Between Pages

To move between pages, you either return to the page list (with the **Return/Back** Key) and select the desired page or move through the pages with the joystick left/right.

### Shortcut Keys

When displaying a page, you can go directly to any page by typing the page number on the keyboard. The short key value of each page is displayed beside the page name on the page list menu.

## 6.4 Within Page Navigation and Display Details

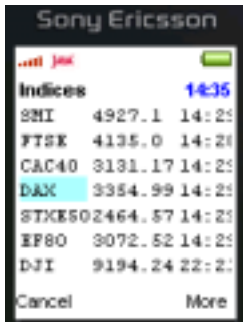
In order to select a line and/or to scroll through a page that is longer than can be displayed on the screen, it is necessary to be in the "within page navigation".

To go into within page navigation, move the joystick downwards. A blue cursor appears on the

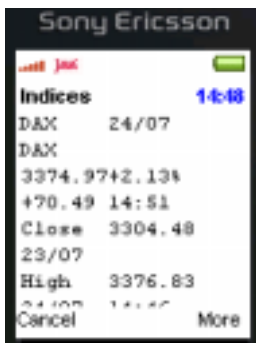
top line symbol. You can now move Up/Down within the page (one line at a time) or fast scroll through the page with the Left/Right action. The cursor is removed with the **Return/Back** key. It is also possible to scroll within a page by clicking the key corresponding to the page number.

To display the detailed information for a value, position the cursor on the corresponding line and select "**Details**" (or "**More -> Details**"). Return to the main page with the **Return/Back** key.

Page with cursor display (within page navigation mode)



Detailed Information Screen



Scroll Up/Down the detailed information screen with the joystick. Return to the main data page with the **Return/Back** key

## 6.5 News Headline Page Display and Updating

The current version allows one news headline page, with a max of 50 headlines stored (last 50 headlines). The news are sorted by their time with the most recent news on top.

To update the news page, click the joystick while the news page is being displayed.

Currently the update will supply all the news that have not yet been received, going back 2 hours.

Note that the "**Update All**" function does not update the news page.

The news headlines are displayed one at a time and the scrolling is also one news headline at a time.

The news received with the last update are indicated with their first line "greyed".

The first line indicates the order of the news in the list, the news group name and the news time stamp.

Unless saved, the news headlines are stored only for the duration of an application session. To keep the news, they have to be saved before terminating the application. From any page, go to and select: "**More -> Save News**".

News Page



## 7. Recommendations Regarding Data Transmission Costs

The system has been optimised to use as few characters as possible for the transmission of updates. Also, the current version with the manual update request limits the risk of high transmission costs without user control.

Note that, as indicated in the introduction, the use of the Sony Ericsson T610 phone can lead to higher transmission costs due to the necessity to exit the application to make a phone call as well as repeat all the data after having received a phone call.

To further optimise the transmission costs, we recommend the following:

- Do not terminate the application unless no further updates are required. There is no cost in keeping connected permanently with GPRS. In fact, it costs less as there are overheads associated with each new connection.
- If you require a fast update of a specific value, display the corresponding page and update only this page.
- Values for which updates are required frequently should be regrouped on the same page, so as to be updated as part of a single page request.
- Do not request "Repeat All" unless you feel your data is incorrect (this should never happen)
- If you require updates for data contained in several pages, do an "Update All" rather than multiple single page updates

The experience shows that the costs can be maintained within a reasonable level (EUR 8-12/Month), including for extensive use. The costs associated with the QuoteFlash service are considerably lower than what is incurred with WAP based applications or steaming only services.

## 8. Handling of Error Situations

- In case of problem, first try to exit the application and restart.
- If the problem persists, switch the phone OFF and then switch it ON again. (in some cases, it may be necessary to remove the battery in order to force the Switch OFF).
- If the application still does not start, uninstall and reload the application:

### **Delete Application**

From the phone main menu, go to "**Entertainment -> Games & more**", position on the QuoteFlash application line, and through the "**More**" menu, select "**Delete**".

### **Download and Install/Upgrade Application**

You can download again the same application download another version. You must the request from the support a reset of your account.

- If when requesting an update, the indication "**requesting....**" on the top line remains for more than 60-90 sec., it means that the GPRS connection has failed. Exit and restart the application



The web page is divided in sections:

### Account

This is the account name and owner of the account logged in

### Pages

This lists the pages already specified for this account

### Page Contents

This lists the instruments contained in the highlighted page, in the order of display on the phone (a max of 50 instruments can be specified on a page)

### Subscribed Groups

These are the data groups and exchanges that have been subscribed by the user, together with the access level authorized (Real-time or Delayed). This can not be changed by the user.

### Instruments

These are the instruments that are supported for the highlighted group. If instruments that are required are not listed, contact the support and, save exceptions, they will be added to the list.

### PDF Documentation

These are the commercial documents that can be displayed (if your browser supports it), printed or downloaded.

## 9.2 Set-up Functions

### 9.2.1 Create a new page

In the "Pages" section, click "Add". A box is displayed at the top left:

As matrix navigation is not currently supported, we recommend that you define only one row ("A") and number the pages sequentially.

A page can be one of two types, "Data" or "News". Only one news headline page can be specified.

The format of the page is 1 or 2 lines per instrument and if 1 line, with 3 or 4 columns.

Currently, the application overrides this setting and assigns the format automatically.

### 9.2.2 Edit a Page

Highlight the page line in the "Pages" window and select "Edit". The following is displayed (top left):

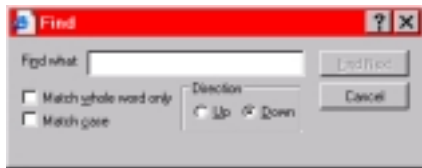
All the fields can be edited. To change the page order in the page list, change the column number within the page row.

### 9.2.3 Add/Remove an Instrument To/From a Page

First of all, you have to check if the required instrument is currently included in the service.

Select the relevant data group in the “Subscribed Groups” window.

Highlight an instrument in the “Instrument” window and perform a “CTRL-F” on the keyboard. The following is displayed:

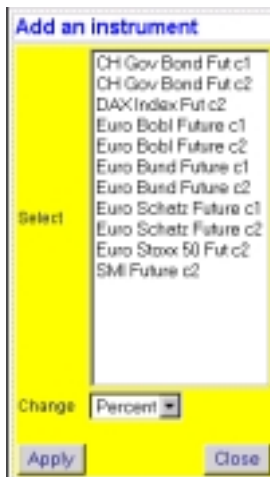


Type any part of the instrument name and if found you can proceed with the selection. If not, you have to request the inclusion of this instrument in the service ([support@dts.ch](mailto:support@dts.ch)).

If the instrument is in the list, you can proceed with the instrument add:

- a) Highlight the page in the “Pages” section.
- b) Select the instrument group in the “Subscribed Groups” section
- c) Click “Add” in the “Page contents” section

The following is displayed (top left):



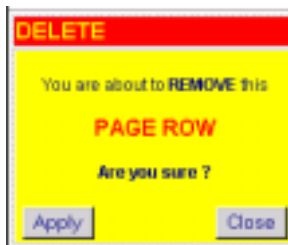
Select the instrument to be added to the page (select also the “Change” format when applicable).

The instrument will be added in the page at a position above the currently highlighted instrument. To add the instrument as the last on the page, first select the **(End-of-Page)** line

The instruments can be moved with the “Up/Down” buttons in the “Page contents” section.

To keep adding instruments from another group, select the group in the “**Subscribed Groups**” window.

To **remove** an instrument, select it in the “Page contents” section and click “Del”. The following is displayed (top left):



### 9.2.4 Set the Instrument Display Parameter

A page can be edited at any time.

Select the instrument in the “Page contents” section and click “Edit”. The following is displayed (top left):

**Edit this page row**

Short: DJC1  
 Full: DJ Future c1  
 Change: Point

Apply Close

The display of the “Change” value (4 column display only) can be in “Point” or “Percent”. Note that on the phone, in the detailed information screen, both are displayed.

### 9.2.5 Activate Settings

To activate the current settings on the phone, click on “**SEND TO PHONE**”. You need to exit and restart the phone QuoteFlash application to get the new settings.

### 9.2.6 Account information Editing

Click “Edit” in the “Account” section. The following is displayed (top left):

**Edit your account**

Title: Mr  
 First name: John  
 Last name: Doe  
 Email: doe@here.com  
 Phone: 9986543213456  
 Language: English  
 Expiration: 31.12.2003  
 User ID: TEST1  
 Password: test

Apply Close

All the fields can be modified by the user, including the password for web access to the account. (initially, there is no password, we recommend that one is set at the first visit).