

QuoteFlash

Wireless Real Time Financial Data Services

QuoteFlash for Sony Ericsson P900

(Version 1.80 – January 2005)

User's Guide

1. **Introduction – System Requirements**
2. **Phone Configuration and Set-up Recommendations**
3. **QuoteFlash Application Download**
4. **User Account Set-up**
5. **Start Application and Initial Set-up**
6. **User Navigation, Data Update and Display Facilities**
7. **Data Transmission Costs**
8. **Handling of Error Situations**
9. **Web Based User Set-up Facilities**

Support :

Tel. +41 22 704 30 60
Fax +41 22 704 30 80
e-mail: support@dts.ch
web: www.quoteflash.com

1. Introduction

The QuoteFlash wireless financial information services are based on the use of the GSM/GPRS mobile phone network facilities with suitable phones (the Nokia 7650/3650 phones, as well as the Sony Ericsson T610 and P800 have been validated and are currently supported). As they become available, other phones will be supported. Check the www.quoteflash.com web site for the latest status.

The services operate through an application that resides on the phone. It is therefore **not** a WAP or HTML WEB based system accessed through a browser, but a true data feed based service.

A careful reading of this guide as well as of the phone manual will enable any user to obtain in very little time the best use and results out of the QuoteFlash service.

It is assumed that the user is familiar with the main functionality of the phone.

System Requirements

In order to use the QuoteFlash service, you need:

- A supported phone, such as the Sony Ericsson P900. The list of the currently supported phones can be found on the QuoteFlash web site.
- To download the QuoteFlash application on the phone
- A subscription with an operator that includes **Web** GPRS access
- If you are in a roaming situation, you must select a network with which your operator has a GPRS roaming agreement (check on the operator web site).
- A valid QuoteFlash account, including the user defined data page specifications

Security and Confidentiality

The QuoteFlash application operates under J2ME (CLDC/MIDP). This is a fully secure and protected environment (also called "sandbox"). The application has no access to any information on the phone, other than its own data. The application cannot affect or corrupt any part or other functions of the phone. Furthermore, removing the application deletes all trace of the application on the phone.

2. Phone Configuration (Sony Ericsson P900)

The phone must be configured for both the WAP access (only required for the application download) and GPRS Web (internet) access (for the QuoteFlash service operation).

2.1 WAP Access Set-up

WAP Account Configuration (for the application download)

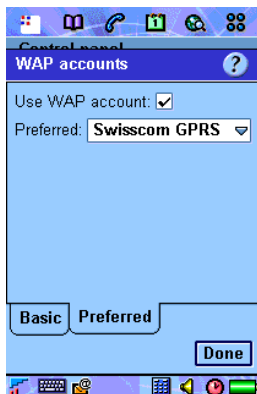
This can be done through the operator web site from which a configuration SMS can be sent to the phone. Once received and saved, it is sufficient to open this SMS and validate the configuration.

Some phones are delivered pre-configured by the operator with which the subscription has been taken.

Alternatively, a phone configurator utility is available at www.sonyericsson.com.

The WAP and Internet accounts can also be configured manually. Refer to the phone manual for the instructions. Make sure that the WAP account to be used specifies the correct Internet account. From the phone menu, select **"Control panel -> Connections -> WAP accounts -> Edit -> Internet account"**.

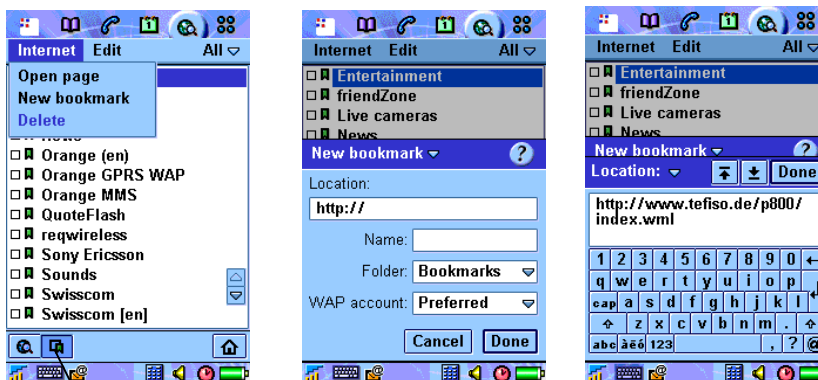
We recommend that the WAP GPRS account be set as the **"Preferred"** account. (**"Control panel -> Connections -> WAP accounts -> Preferred"**). Set the **"Use WAP account"** ON and select the account with **"Preferred"**.



Download QuoteFlash WAP Site Bookmark Set-up

A specific version of the QuoteFlash application must be downloaded and used for the SE P800.

From the phone menu, go to **"Internet"**. The browser will start. Select the **"Bookmark View"** (click on the bookmark icon at the bottom of the browser screen).



Bookmark icon

Select **"Internet -> New bookmark"** and enter the download page address:

`http://www.tefiso.de/qf/index.wml`

Enter the name **"QuoteFlash"** to identify the bookmark

The folder should be set to **“Bookmarks”**

The WAP account should be set to **“Preferred”** (if the recommendation above in WAP Account Configuration has been followed).

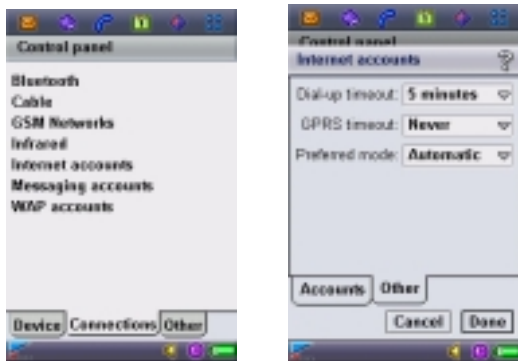
2.2 GPRS Web (Internet) Account Configuration

The Quote Flash service requires the use of a Web (Internet) GPRS Account (not WAP).

We recommend that a specific Web (internet) GPRS account be configured, manually or Over the Air through a configuration message (sent by us) and that a new account be created. Modifying an existing account may not work. It is important that the GPRS connection be set as permanent (no timeout).

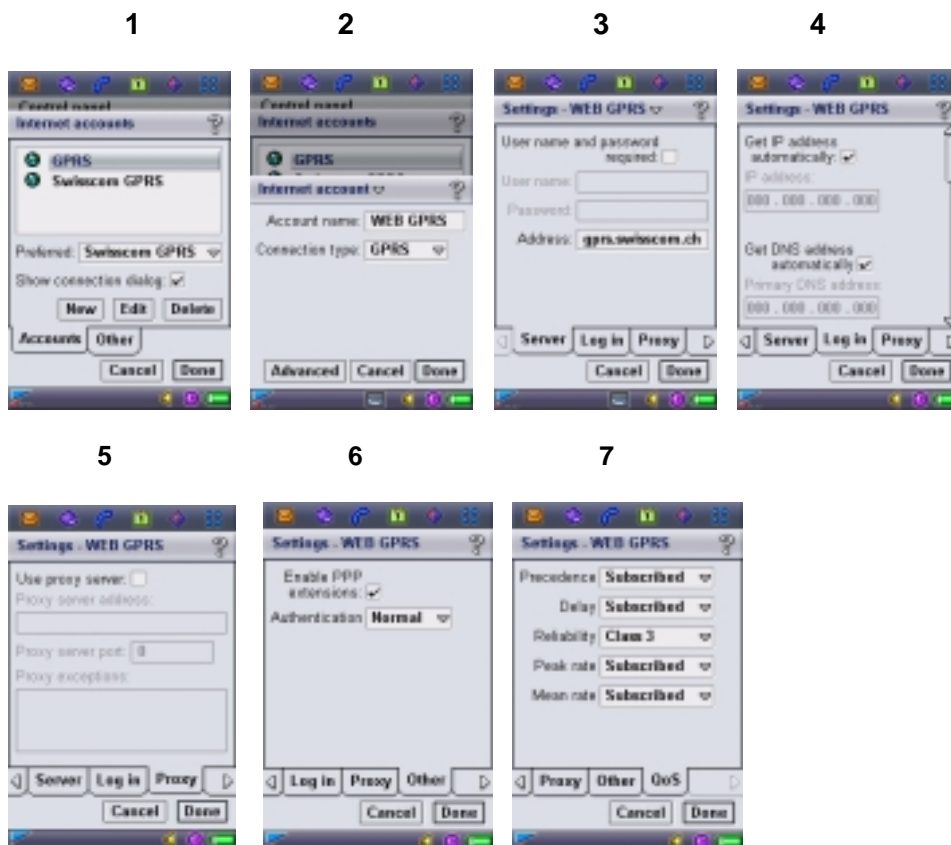
From the main phone menu go to:

“Control Panel -> Connection -> Internet accounts -> Other” to set the GPRS permanent.



To configure the WEB (internet) account that will be used by the QuoteFlash application, go to:

“Control Panel -> Connection -> Internet accounts -> New”
(If the access point has to be modified, go to **“Edit”**)



2.3 Phone Set-up Recommendations

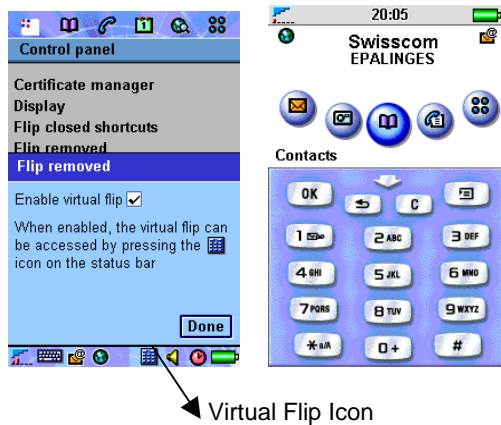
2.3.1 Flip Usage, Virtual Flip

The QuoteFlash application **can not** be used with the Flip closed. The Flip must therefore be open or removed in order to start the application and use the service. We recommend that the Flip be removed, as it facilitates a fully mobile, one hand, operation of the application, through the jog dial.

If, as recommended, the flip has been removed, you should activate the “**Virtual Flip**” to provide the same functionality with the use of the stylus.

Select “**Control Panel -> Device -> Flip Removed**” and set the “**Enable virtual flip**”

The virtual flip is displayed through the corresponding icon at the bottom of the screen. It is removed by clicking the arrow on the flip.

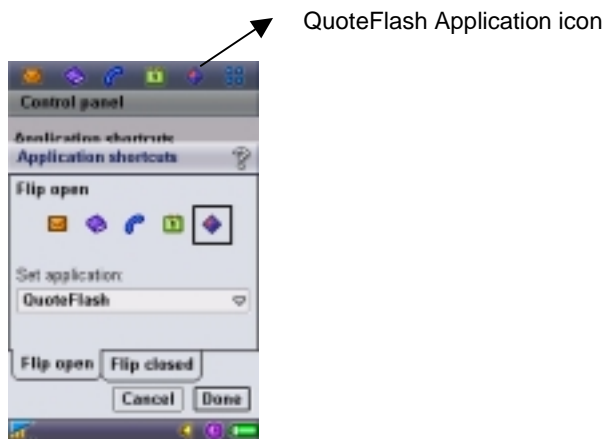


2.3.2 Application Short Cut Icon

To facilitate the start and recall of the QuoteFlash application with the Jog Dial, a short cut icon can be set, located at the top of the screen and allowing access to the application with one click from any position on the phone or through the Jog Dial.

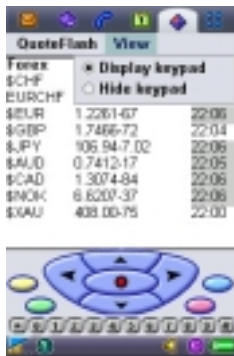
From the phone main menu, select “**Control Panel -> Application shortcuts**” and in Set application, select “**QuoteFlash**”.

We recommend that you make “QuoteFlash” one of the 5 application shortcuts.



2.3.3 Display Soft Keypad

The soft keypad (bottom part of the application screen) can be removed. The current version of the application requires the keypad for full functionality. Set the "Display keypad as specified below.



2.3.4 Phone Software Revision Levels

Early versions of the Sony Ericsson P900 were delivered with incomplete functionality. This can restrict some of the facilities of QuoteFlash.

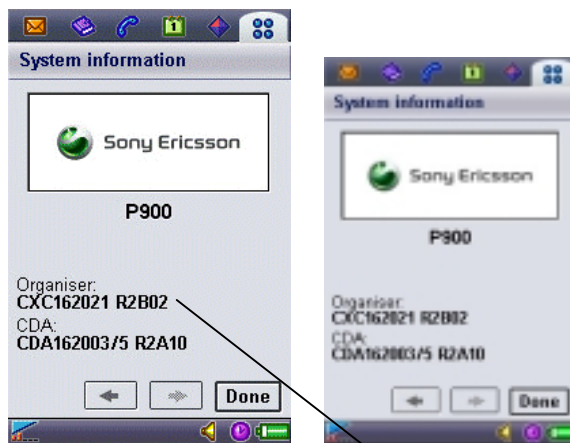
In order to benefit fully from the QuoteFlash facilities, some phones may require to be updated. This software update can be performed on-line with the phone connected to a PC on which the P900 software suite has been installed. The software updates can be checked, obtained and install from:

www.sonyericsson.com/updateservice/P900

Note that it is a lengthy procedure and that it is can be better to have your phone supplier doing it for you.

The current level of the phone software can be displayed from:

"**Main phone menu -> Edit -> System information**". The minimum requirements for an optimal operation are as displayed below:



most important parameter to be checked

2.3.5 Phone Language

The P900 software has some limitations if you configure your phone in any other language than English. In particular, the characters in the data pages are displayed with the smallest font and it is not possible to change the font. This makes it very difficult to read the displayed data.

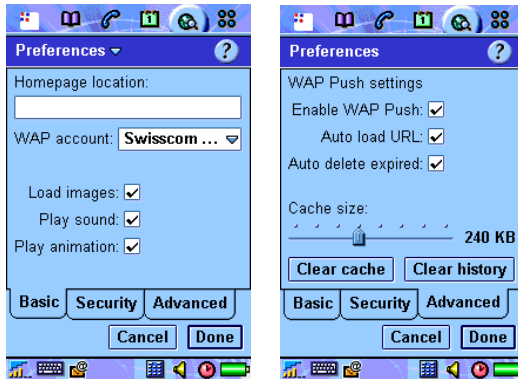
Until Sony Ericsson correct this, you have to configure your phone language to **English**.

Follow the instructions in the phone manual to set or reset the phone language.

3. QuoteFlash Application Download (Initial and Upgrade)

Before you start the download, you must perform a "Clear Cache" of the Wap Browser.

Go to and select: "**Internet -> Bookmarks View -> Edit -> Preferences -> Advanced -> Clear cache**"



3.1 Initial Application Download (first time)

From the phone main menu, go to "**Internet -> Bookmark view**" and open the **QuoteFlash bookmark** (download page).

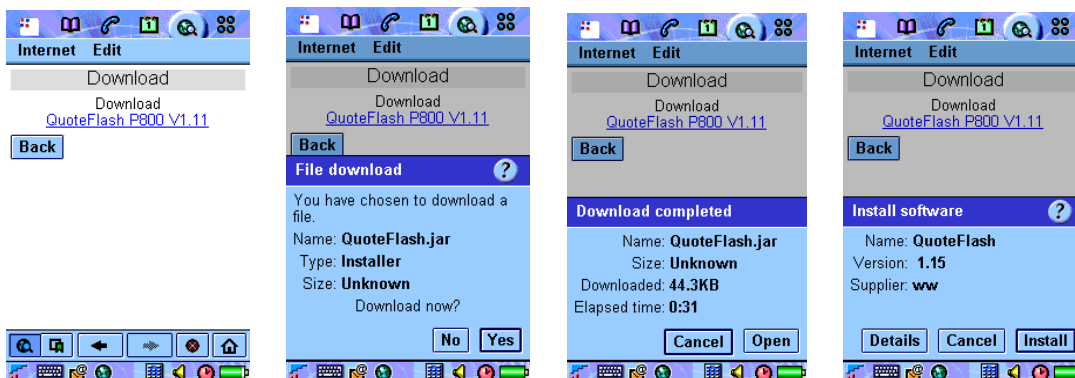
(The bookmark and its settings must be configured as specified under par. 2.1)

The GPRS connection will be established and the WAP page is downloaded and displayed.

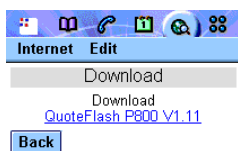
Select the current application version.

Open to start the download and answer "yes" to the download message.

The selected application is downloaded and then select "**Open**" then "**Install**" to perform the installation.



Exit from the menu and disconnect the Wap connection by selecting the connection icon at the bottom of the screen and then selecting "**Disconnect**"



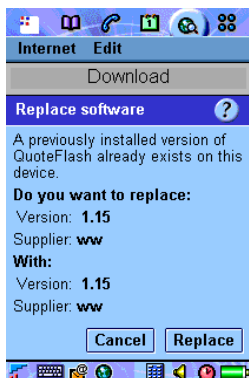
Connection icon

3.2 Application Upgrade

To download an upgrade, **do not remove the current application version**. Perform the download as for the initial download. After downloading the application, you will be requested to perform a **“Replace”** of the current version with the new version. Answer yes and the replace (upgrade) will occur as per the initial download.

If you remove the current version of the application and/or perform a new initial download, you will have to request a resetting of your account, as the information linking the phone to the account has been lost.

This linking is performed at the first use (account access) of an application. It is preserved with an upgrade.



3.3 Remove (Delete) the QuoteFlash Application

If you wish or need to remove the QuoteFlash application, proceed as follows:

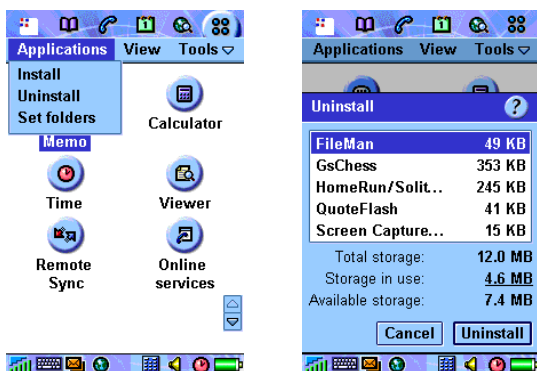
From the phone main menu, go to **“Application -> Uninstall”**. Select the QuoteFlash line and the **“Uninstall”**.

The application will be removed, as well as any data related to it. In fact there will remain no trace of the application on the phone.

This means however that if you reinstall the application, the settings have to be entered again.

Also, you may have to request a reset of your account so that the connection to the server is allowed again.

If you wish simply to upgrade, download the new version without removing the current version. All the settings (including some that are not visible to the user) will be preserved.



4. User Account Setup

In order to access a QuoteFlash service, you must have an account registered and the data page and page contents specified.

This specification includes:

- For each data page, the page name and page format (currently only one default format)
- For each page, the list of the instruments to be displayed on the page, in the order of display
- For each instrument, the display format (currently the “**Change**” in point or %)

The account is identified by a name that must be supplied when it first accessed (see section 5 for initial set-up). Once an account has been accessed from a phone, it can only be accessed from this particular phone. The account can be reset on demand if it must be accessed from another phone (for instance if the user changes phone) or if a new application was installed without going through the upgrade (Replace) procedure.

Initially, the account is configured by us (based on the user specifications). It can be changed at any time at the user request.

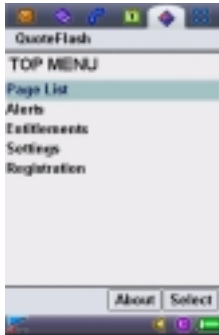
The user can have access to a web site (www.quoteflash.com) that provides the functionality to create and modify the account data specifications, within the assigned user entitlements.

(See section 9 for the Web based facilities).

5. Start/Exit Application and Initial Setup

5.1 Start Application

From the phone Main Menu, select the “**QuoteFlash**” application or If it has been set as recommended, select the QuoteFlash “Short Cut” icon at the top of the screen (with the stylus or through the Jog Dial) . The application starts and the Top Menu is displayed:



5.2 Exit Application

To exit the application, go to the Top Menu and select “**QuoteFlash -> Exit**”

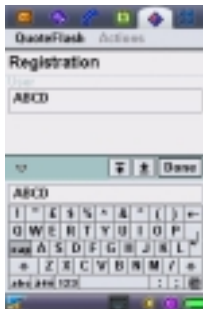
5.3 Initial Setup

The first time an application is used, the account name and time zones must be set:

5.3.1 Set Account

From the Application Top Menu, select “**Registration**”, enter the provided account name, respecting the upper/lower case, and validate through “**QuoteFlash -> OK**”.

The display returns to the Top Menu



Note on Account Setting

The first time you connect with a new account setting, the system will link this phone to the account. Thereafter, the account can only be used from this phone. If an application upgrade (Replace) is performed, the settings are preserved.

If the user changes phone or installs a new QuoteFlash application, the account must be reset to allow the connection and re-establish the link. Contact the support when this is necessary.

5.3.2 Set Timezone

There are two time zone settings:

- **Quote Time Offset** (adjusts the update time stamp from GMT)
- **Clock Time Offset** (adjusts the current time always displayed on the first line of a data/news display page)

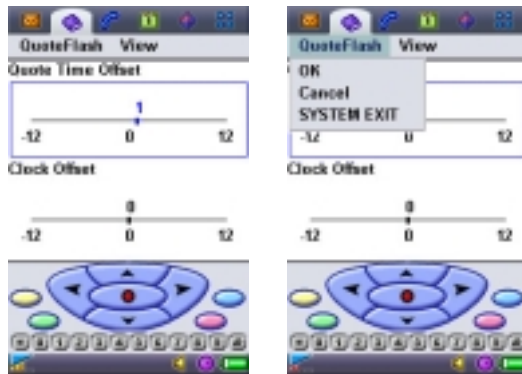
The clock time is taken from the "Day and time" settings (set by user)

From the application Top Menu, go to "QuoteFlash -> Settings".

Select which time offset is to be adjusted by moving Up/Down.

Adjust the offset value by moving Right/Left

Validate through the "QuoteFlash -> OK". The display returns to the Top Menu



6. User Navigation, Data Update and Display Facilities

6.1 User Navigation Facilities

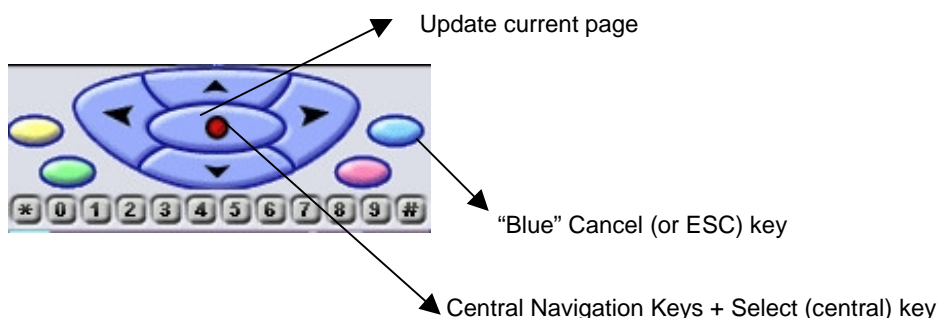
The navigation facilities allow the user to access the data and request updates. With the P800 there are 3 types of navigation facilities available:

- "Soft" keys on screen navigation area
- Jog Dial
- Direct touch-screen capability

6.1.1 Screen Navigation Area

Whenever required, the Screen Navigation Area is displayed. "Soft" keys are available that can be selected with the stylus (or any touch screen action).

For QuoteFlash, a specific allocation of those keys has been made as follows:



Central Navigation Keys

- 4 direction keys (Up/Down, Left/Right)
- A central "Select" key (red)

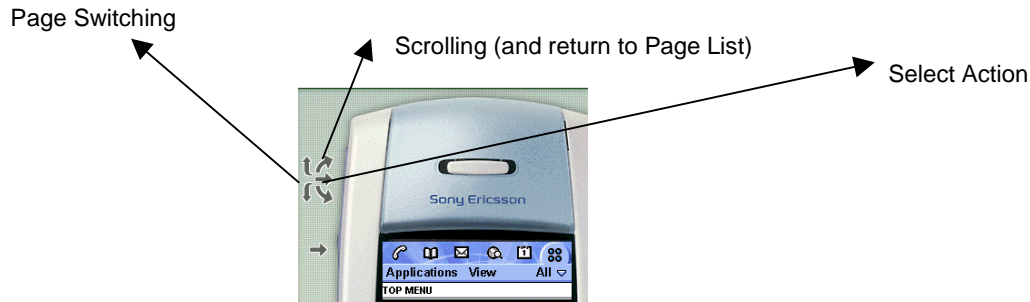
Cancel (or ESC) Key

- Blue key (top right) is the cancel (return to previous state)

Screen Short-Cuts

- a screen can be displayed by selecting its number on the number line

6.1.2 Jog Dial Navigation



The Jog Dial has 5 positions used by the QuoteFlash application (when displayed).

All the data pages, the detailed information on any value and update requests for any page can be achieved by using only the Jog Dial, allowing complete "One Hand" operation.

Page Switching / Page Scrolling

Moving the Jog Dial Up/Down towards or away from the screen will switch pages, allowing to go through all the configured pages. If the (blue) cursor is present, the same action will scroll within the page, screen by screen

Select Action

The select action is by pressing the Jog Dial (one click)

Scrolling Function and Action

Scrolling is by rolling the wheel Up/Down.

When within a page, it is then possible to scroll through the values line by line and by selecting open the detailed information screen. Selecting again when the detailed information is displayed will go back to the page display, without cursor.

To return to the page list (to select another page), it is sufficient to scroll "outside" the page area (2 wheel steps). For instance, if at the top of the page, rolling the wheel 3 steps will display the page list.

6.1.3 Direct Touch screen Capability

You can select a page line directly on the screen with the stylus. The cursor will appear. If you select the line again, the detailed information screen is displayed. selecting anywhere in the detailed screen with the stylus will return the display to the page (with the cursor ON)

6.2 Application Connect

In order to get and display data updates, you must first be connected.

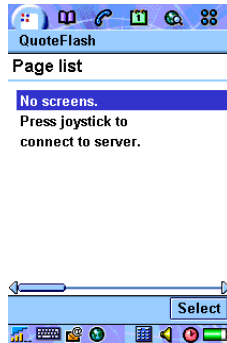
From the application Top Menu, select the "Page List" menu line (then select a page if there is already a page list displayed) and select. (through stylus or jog dial)

To select a page from the page list, move to the page line on the list and select.

Page List



First Connection

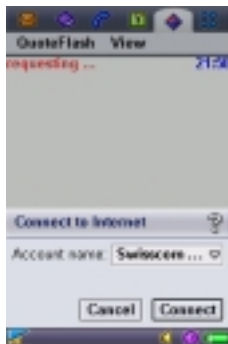


The number associated with each page on the list corresponds to the "short Cut" allowing the switch from one page to another.

Data Page



When you request an update of the page (or select on the page list if there is no page yet) while you are not yet connected, the Account selection screen is displayed. Select the configured **GPRS web Account**.



The connection will be established, the current data page configuration downloaded as well the current values for all instruments (as "**Repeat**" values, indicated with an "**R**" beside the time stamp). This may take about 15-20 sec for an average configuration.

6.3 Get Data Updates

Manual Updates

To update the currently displayed page, do a Select (stylus or jog dial).

To update all the pages, while displaying any page, select "**QuoteFlash ->Update All**".



The update time depends on how many instruments are being updated and on the network performance. The update time for the current page will normally be around 3-4 sec for an 8-10 line page. An "Update All" may take 4-5 sec). Whenever an update request is made, the status of the request is indicated at the top of the page ("**requesting -> receiving -> processing**"). If there is a problem with the connection, the indication will remain on "**requesting**" until a time out occurs. In this case, Exit and restart the application. Note that this top line displays the current page name and the current time (the time of the phone, adjusted with the clock time offset (see par 5.3.2 for clock offset setting)

The values that are updated are indicated on the time stamp (red for 3 sec. and then grey).



Automatic Updates

It will be possible in a future version to set the system to request updates automatically with a periodicity specified by the user. This will require great care so as not to incur too high costs of transmission.

This feature is not available in the current version

Repeat All

This Function, accessed through the "**QuoteFlash**" menu while displaying a data page, will request a refresh of all data, whether there have been updates or not. The time stamp is displayed with an "R".

This is used only if the user feels that it is missing updates (should never happen!) and wishes to make sure that the pages are updated to the latest values.

This function is executed automatically when the first request is made after the start of the application.

6.4 Navigation Between Pages

To move between pages, you can return to the page list (with the “**Cancel**” soft key) and select the desired page, or move through the pages with the navigation soft keys (left/right) or scroll out of the page with the jog dial, which will displays the page list or use the page switching facility of the Jog Dial (sse par 6.1.2) .

Shortcut Keys

When displaying a page, you can go directly to any page by selecting the page number on the screen navigation area. The short key value of each page is displayed with the page name on the page list menu.

6.5 Within Page Navigation and Display Details

In order to select a line and/or to scroll through a page that is longer than can be displayed on the screen, it is necessary to be in the “**within page navigation**”.

To go into within page navigation, move the joystick (or navigation key) downwards. A blue cursor appears on the top line symbol. You can now move Up/Down within the page (one line at a time) or fast scroll through the page with the Left/Right action or with the Jog Dial (see par 6.1.2). The cursor is removed with “**Cancel**”.

To display the detailed information for a value, position the cursor on the corresponding line and select “**QuoteFlash -> Details**”. To return to the page, select “**Cancel**”. With the Jog Dial, select to display the details and select again to return to the page (this also removes the cursor).

Page with cursor display (within page navigation mode)



Detailed Information Screen



Select “**Cancel**” or “**QuoteFlash -> List**” to return to the data page. With the Jog Dial, press Select to return to the page.

6.6 News Headline Page Display, Updating and Saving

The current version allows one news headline page, with a max of 50 headlines stored (last 50 headlines).

The news are sorted by their time with the most recent news on top.

To update the news page, click the Select key (Jog dial or Screen Navigation Area) while the news page is being displayed.

Currently the update will supply all the news that have not yet been received, going back 2 hours.

Note that the "**Update All**" function does not update the news page.

The news headlines are displayed one at a time and the scrolling is also one news headline at a time.

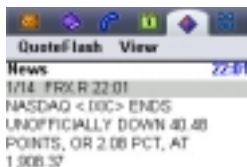
The news received with the last update are indicated with the first line "greyed".

The first line indicates the order of the news in the list, the news group name and the news time stamp.

Unless saved, the news headlines are stored only for the duration of an application session. To keep the news, they have to be saved before terminating the application. From any page, go to and select: "**QuoteFlash -> Save News**".

With the Jog Dial, to return to the page list, scroll out /top or bottom) of the news list (3 wheel steps).

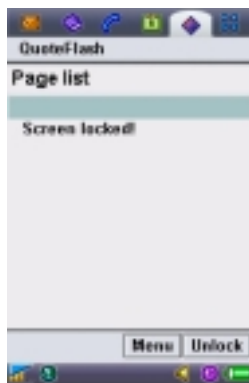
News Page



6.7 Screen Lock

To avoid unwanted actions when carrying the phone, a screen lock feature is available.

Display the page list and select "**Lock**". Most of the screen is now deactivated. To reactivate select "**Unlock**"



7. Recommendations Regarding Data Transmission Costs

The system has been optimised to use as few characters as possible for the transmission of updates. Also, the current version with the manual update request limits the risk of high transmission costs without user control.

To further optimise the transmission costs, we recommend the following:

- Do not terminate the application unless no further updates are required. There is no cost in keeping connected permanently with GPRS. In fact, it costs **less** as there are overheads associated with each new connection.
- If you require a fast update of a specific value, display the corresponding page and update only this page.
- Values for which updates are required frequently should be regrouped on the same page, so as to be updated as part of a single page request.
- Do not request "Repeat All" unless you feel your data is incorrect (this should never happen)
- If you require updates for data contained in several pages, do an "Update All" rather than multiple single page updates

The experience shows that the costs can be maintained within a reasonable level (Sfrs 20-30.-/Month), including for extensive use. The costs associated with the QuoteFlash service are considerably lower than what is incurred with WAP or WEB (HTML) based applications.

8. Handling of Error Situations

- In case of problem, first try to exit the application and restart.
- Additionally, while on the top menu, you can select "**QuoteFlash -> Reset Data Only**". This will clear the pages and exit the application. You can then restart.
Note that you should not use the "**Reset All**" except when instructed to do so by our support.
- If the problem persists, switch the phone OFF and then switch it ON again
- If when requesting an update, the indication "requesting..." on the top line remains for more than 60-90 sec., it means that the GPRS connection has failed. Exit and restart the application (eventually also disconnect the GPRS connection).
- If the application still does not start, uninstall and reload the application:

Delete Application

Make sure that the application is not running.

From the phone main menu, go to "**Application -> Uninstall**", position on the QuoteFlash application line, and select "**Uninstall**".

Download and Install/Upgrade Application

You can download again the same application download another version. You must the request from the support a reset of your account.

The web page is divided in sections:

Account

This is the account name and owner of the account logged in

Pages

This lists the pages already specified for this account

Page Contents

This lists the instruments contained in the highlighted page, in the order of display on the phone (a max of 50 instruments can be specified on a page)

Subscribed Groups

These are the data groups and exchanges that have been subscribed by the user, together with the access level authorized (Real-time or Delayed). This can not be changed by the user.

Instruments

These are the instruments that are supported for the highlighted group. If instruments that are required are not listed, contact the support and, save exceptions, they will be added to the list.

PDF Documentation

These are the commercial documents that can be displayed (if your browser supports it), printed or downloaded.

9.2 Set-up Functions

9.2.1 Create a new page

In the "Pages" section, click "Add". A box is displayed at the top left:

As matrix navigation is not currently supported, we recommend that you define only one row ("A") and number the pages sequentially.

A page can be one of two types, "Data" or "News". Only one news headline page can be specified.

The format of the page is 1 or 2 lines per instrument and if 1 line, with 3 or 4 columns.

Currently, the application overrides this setting and assigns the format automatically.

9.2.2 Edit a Page

Highlight the page line in the "Pages" window and select "Edit". The following is displayed (top left):

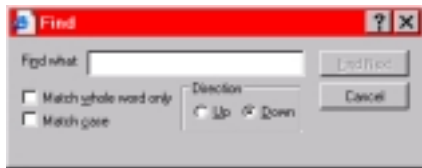
All the fields can be edited. To change the page order in the page list, change the column number within the page row.

9.2.3 Add/Remove an Instrument To/From a Page

First of all, you have to check if the required instrument is currently included in the service.

Select the relevant data group in the "Subscribed Groups" window.

Highlight an instrument in the "Instrument" window and perform a "CTRL-F" on the keyboard. The following is displayed:

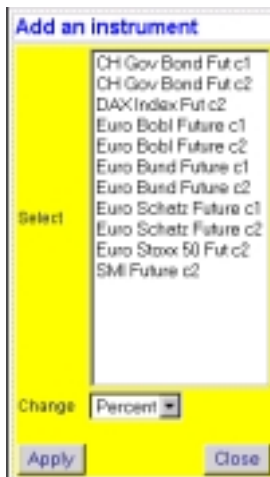


Type any part of the instrument name and if found you can proceed with the selection. If not, you have to request the inclusion of this instrument in the service (support@dts.ch).

If the instrument is in the list, you can proceed with the instrument add:

- a) Highlight the page in the "Pages" section.
- b) Select the instrument group in the "Subscribed Groups" section
- c) Click "Add" in the "Page contents" section

The following is displayed (top left):



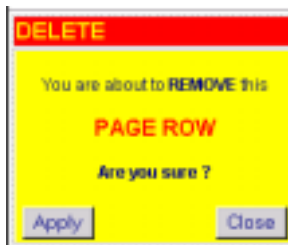
Select the instrument to be added to the page (select also the "Change" format when applicable).

The instrument will be added in the page at a position above the currently highlighted instrument. To add the instrument as the last on the page, first select the **(End-of-Page)** line

The instruments can be moved with the "Up/Down" buttons in the "Page contents" section.

To keep adding instruments from another group, select the group in the **"Subscribed Groups"** window.

To **remove** an instrument, select it in the "Page contents" section and click "Del". The following is displayed (top left):



9.2.4 Set the Instrument Display Parameter

A page can be edited at any time.

Select the instrument in the "Page contents" section and click "Edit". The following is displayed (top left):

Edit this page row
 Short DJC1
 Full DJ Future c1
 Change Point
 Apply Close

The display of the “Change” value (4 column display only) can be in “Point” or “Percent”. Note that on the phone, in the detailed information screen, both are displayed.

9.2.5 Activate Settings

To activate the current settings on the phone, click on “**SEND TO PHONE**”. You need to exit and restart the phone QuoteFlash application to get the new settings.

9.2.6 Account information Editing

Click “Edit” in the “Account” section. The following is displayed (top left):

Edit your account
 Title Mr
 First name John
 Last name Doe
 Email doe@here.com
 Phone 9986543213456
 Language English
 Expiration 31.12.2003
 User ID TEST1
 Password test
 Apply Close

All the fields can be modified by the user, including the password for web access to the account. (initially, there is no password, we recommend that one is set at the first visit).