

QuoteFlash

Mobile Real Time Financial Data Services

QuoteFlash for Nokia Series 40 Phones

(March 2005)

Quick Guide *(refer to Nokia phone guides for further instructions)*

- 1. Phone and Application Settings**
- 2. Connect, login and display data**
- 3. Data updates and navigation**
- 4. Web Based User Setup Facilities**

Support :

Tel. +41 22 704 30 60
Fax +41 22 704 30 80
e-mail: support@dts.ch
web: www.quoteflash.com

1. **Phone and Application Settings for Nokia Series 40 Phones**

1.1 **Browser Settings** (may not be needed on all phones)

The browser is used to download the application.

From the Phone menu:

Services -> Settings -> Connection settings -> Active settings

Select your operator GPRS settings.

If necessary, request those settings from the operator web site or from the Nokia web site.

1.2 **GPRS Settings**

From the phone menu:

Settings -> Connectivity -> GPRS -> GPRS connection

Select "Always online"

1.3 **Application Download**

From the phone Browser, go to address:

<http://www.tefiso.de/qf/index.wml>

Select the version corresponding to the Java level of the phone (MIDP1 or MIDP2).

Download and install the application (remember the location of installation!)

1.3 **Application Settings**

From the phone menu:

Applications -> Collection -> Select application -> QuoteFlash -> Options

-> Web access

-> Select "Allowed"

-> Connect via -> Internet

-> Select the operator internet access

You can also in some case select "Connect via -> Default"

In this case, the application will use the browser settings for its connection.

2. **Application START / CLOSE**

To start the application, from the phone menu, go to:

"Application -> Collection -> Select application -> QuoteFlash -> Options -> Open

To connect, go through:

" -> Page list -> Options -> Select

Select and update a page (the very first time, simply do "Select").

You are prompted to allow "Web Access", select "allow"

The first time you use the application, you must first enter the provided account name then do "Options -> OK)

The "Logging in" appears, then after a few seconds, the first page, fully updated.

To close the application, press the red (disconnection) key or fold the phone (clamshell models).

3. Set the Page Format, Character Size and Screen Layout

3.1 Page format

Two page formats can be set:

- **1r3c** -Display 3 fields (Symbol, Last update and Time Stamp)
- **1r4c** -Display 4 fields (Symbol, Last update Change and Time Stamp)

The page format is set by accessing the account on the web site (www.quoteflash.com)
(See section 4 below)

3.2 Page Layout (for MIDP2 versions)

While displaying a page, select "Options -> Layout"

Moving up down will change the character size. The active column ids positioned by moving Left/Right. A column is activated by typing its number (1, 2, 3, 4)
We recommend you start with the left most column (column 4)
Save the desired layout through "Save This" to change only this page or through "Options -> Save all" to apply the layout to all the pages.

4. Data Updates and Navigation

- To update the currently displayed page, press the key 0 (zero)
- To move to another page, move the right / left or press the page number
- To display the detailed information, move down and position the cursor on the value (when the blue cursor is displayed, moving right / left will scroll through the page)
 - Press "Options" and select "Details"
 - To return to the page, press the soft key and select "List"
 - To remove the cursor, press "Cancel"
- To go back to the page list press the soft key and select "List"
- To get the news updates, display the news page and do "Options -> Update", or press key 0.
Scroll through the news with Up / Down

4. Web Based User Set-Up Facilities

4.1 Web site user facilities

The Web site facilities are located at the URL: www.quoteflash.com

The user can create and/or modify pages. In order to display the account and the facilities, the user must enter the "Account Name" (same name as used for the registration on the phone) and a password (initially supplied or user modified).

4.1.1 Browser Settings

In order to access the web site and make full use of its facilities, some settings are required in the browser. These settings are very much standard and do not affect the security or any other aspect of the browser operation.

Settings for Internet Explorer 6.x

- Cookies

In "Tools -> Internet options -> Privacy -> Advanced", make sure that the "Always allow session cookies" is set.

- Cache Parameters

Go to "Tools -> Internet options -> General"

In Section "Temporary Internet Files -> Settings", set the option for "check for newer version of stored pages" to "automatically"

- Refresh

Go to "Tools -> Internet options -> Security -> Custom level -> Allow META REFRESH" and set to "Enable"

Settings for Internet Explorer 5.x

- Cookies

In "Tools -> Internet options -> Security -> Custom level", make sure that the "Allow per-session cookies (not stored)" is set to "Enable".

- Cache Parameters

Go to "Tools -> Internet options -> General"

In Section "Temporary Internet Files -> Settings", set the option for "Check for newer version of stored pages" to "automatically"

4.1.2 Web Page Layout

Mozilla/4.0 (compatible; MSIE 6.0; Windows NT 5.1; 81.62.78.242 (242.78.62.81.dial.bluewin.ch))

Select (14,1) (IE5+)

QuoteFlash
Mobile Phone Financial Data Services

Site Map
[Service description](#)
[Account Management](#)

PDF Documentation
[Guide Nokia 7650-3650](#) 131892
[Guide P800](#) 377604
[Guide SE-T610](#) 135787
[ForexWatch Value List](#) 9375
[Order Form](#) 7490
[Pricing](#) 6040
[Selection NonProf](#) 17141
[Selection Prof](#) 17311

Click to display document.
If not displayed, right click and save in a folder.

Customer Login

Account
 TEST1 Doe John 55

Page Contents

\$CHF	\$/CHF	Percent		
\$EUR	Euro/\$	Percent		
EURCHF	EUR/CHF	Percent		
\$GBP	GBP/\$	Percent		
\$JPY	\$/JPY	Percent		
\$AUD	\$/AUD	Percent		
\$CAD	\$/CAD	Percent		
EURJPY	EUR/JPY	Percent		
GBPCHF	GBP/CHF	Percent		
\$XAU	\$/Gold	Percent		
\$XAG	\$/Silver	Percent		

(End of Page)

Subscribed Groups

[News]	Realtime
CBOT (Financials)	Realtime
CME (IOM)	Realtime
Currency Cross Rates	Realtime
Currency Spot Rates	Realtime
Eurex	Realtime
Euronext Futures	Realtime
Govt Bond Yields	Realtime
Interest Rates (Deposit)	Realtime
IPE	Realtime
LSE	Realtime

Instruments

\$AUD	\$/AUD
\$BRL	\$/BRL
\$CAD	\$/CAD
\$CHF	\$/CHF
\$CZK	\$/CZK
\$DKK	\$/DKK
\$HKD	\$/HKD
\$HUF	\$/HUF
\$INR	\$/INR
\$JPY	\$/JPY
\$KRW	\$/KRW

The web page is divided in sections:

Account

This is the account name and owner of the account logged in

Pages

This lists the pages already specified for this account

Page Contents

This lists the instruments contained in the highlighted page, in the order of display on the phone (a max of 50 instruments can be specified on a page)

Subscribed Groups

These are the data groups and exchanges that have been subscribed by the user, together with the access level authorized (Real-time or Delayed). This can not be changed by the user.

Instruments

These are the instruments that are supported for the highlighted group. If instruments that are required are not listed, contact the support and, save exceptions, they will be added to the list.

PDF Documentation

These are the commercial documents that can be displayed (if your browser supports it), printed or downloaded.

4.2 Set-up Functions

4.2.1 Create a new page

In the "Pages" section, click "Add". A box is displayed at the top left:

As matrix navigation is not currently supported, we recommend that you define only one row ("A") and number the pages sequentially.

A page can be one of two types, "Data" or "News". Only one news headline page can be specified.

The format of the page is 1 or 2 lines per instrument and if 1 line, with 3 or 4 columns.

Currently, the application overrides this setting and assigns the format automatically.

4.2.2 Edit a Page

Highlight the page line in the "Pages" window and select "Edit". The following is displayed (top left):

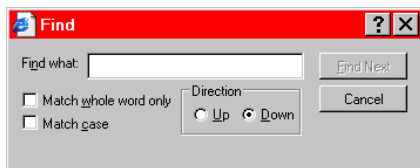
All the fields can be edited. To change the page order in the page list, change the column number within the page row.

4.2.3 Add/Remove an Instrument To/From a Page

First of all, you have to check if the required instrument is currently included in the service.

Select the relevant data group in the “Subscribed Groups” window.

Highlight an instrument in the “Instrument” window and perform a “CTRL-F” on the keyboard. The following is displayed:

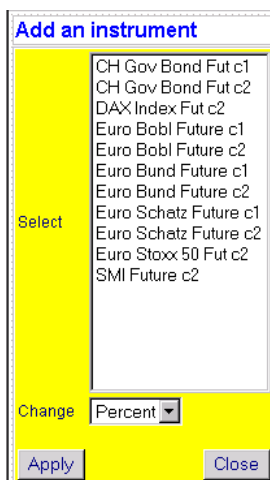


Type any part of the instrument name and if found you can proceed with the selection. If not, you have to request the inclusion of this instrument in the service (support@dts.ch).

If the instrument is in the list, you can proceed with the instrument add:

- a) Highlight the page in the “Pages” section.
- b) Select the instrument group in the “Subscribed Groups” section
- c) Click “Add” in the “Page contents” section

The following is displayed (top left):



Select the instrument to be added to the page (select also the “Change” format when applicable).

The instrument will be added in the page at a position above the currently highlighted instrument. To add the instrument as the last on the page, first select the **(End-of-Page)** line

The instruments can be moved with the “Up/Down” buttons in the “Page contents” section.

To keep adding instruments from another group, select the group in the “**Subscribed Groups**” window.

To **remove** an instrument, select it in the “Page contents” section and click “Del”. The following is displayed (top left):



4.2.4 Set the Instrument Display Parameter

A page can be edited at any time.

Select the instrument in the “Page contents” section and click “Edit”. The following is displayed (top left):

Edit this page row

Short **DJC1**

Full **DJ Future c1**

Change

The display of the “Change” value (4 column display only) can be in “Point” or “Percent”. Note that on the phone, in the detailed information screen, both are displayed.

4.2.5 Activate Settings

To activate the current settings on the phone, click on “**SEND TO PHONE**”. You need to exit and restart the phone QuoteFlash application to get the new settings.

4.2.6 Account information Editing

Click “Edit” in the “Account” section. The following is displayed (top left):

Edit your account

Title

First name

Last name

Email

Phone

Language

Expiration **31.12.2003**

User ID **TEST1**

Password

All the fields can be modified by the user, including the password for web access to the account. (initially, there is no password, we recommend that one is set at the first visit).